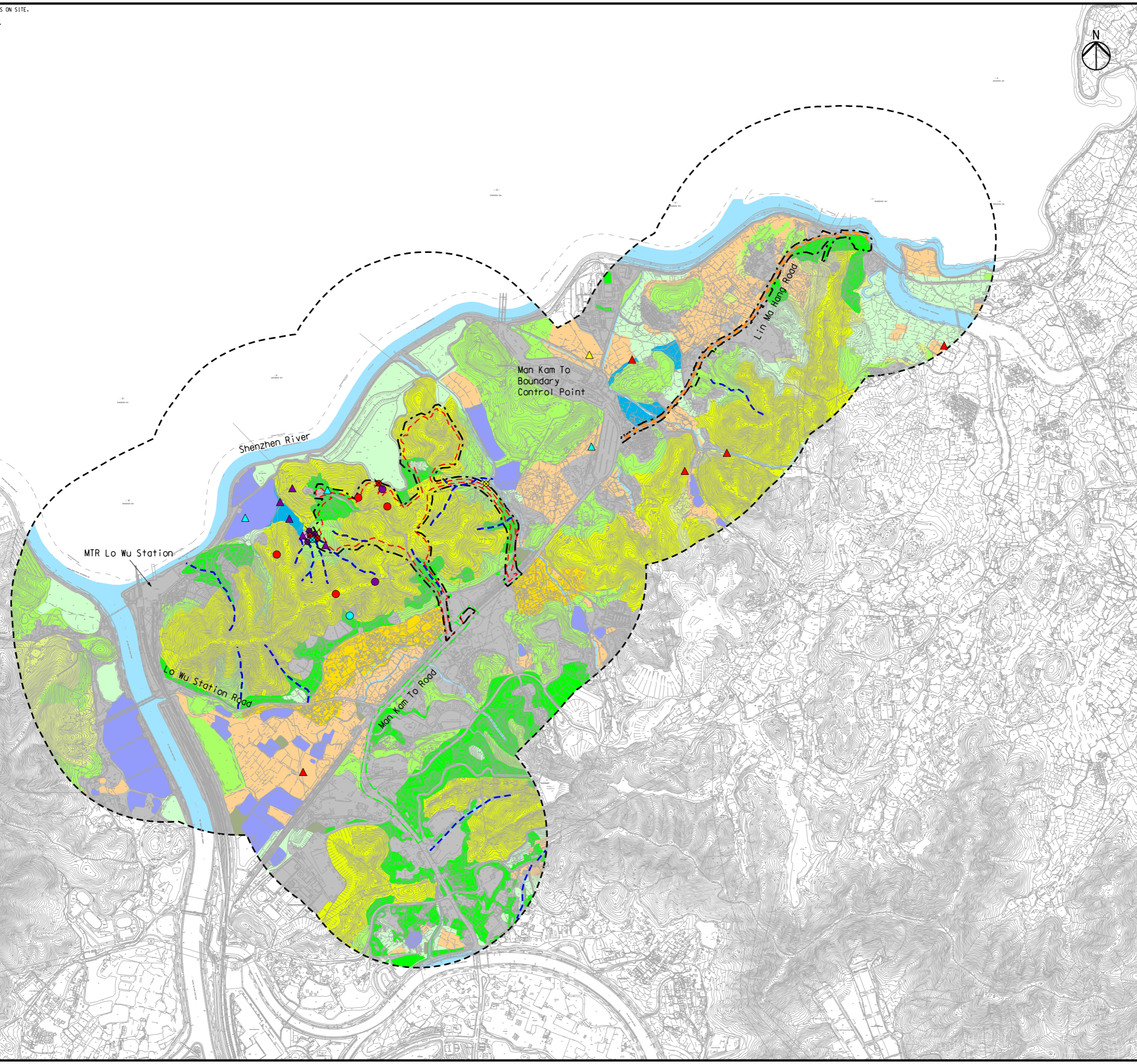


Printed by : 2/29/2016
 Filename : G:\env\project\2314448\13 Drawing Deliverables\Reports\015 EIA\20160229 Revised Final EIA_v1\Ch 9 Ecology\Figure 9.7 - Locations of Mammal and Herpetofaunal Species of Conservation Importance at Sandy Ridge.dgn

DO NOT SCALE DRAWING. CHECK ALL DIMENSIONS ON SITE.
 ALL RIGHTS RESERVED.
 © OVE ARUP & PARTNERS HONG KONG LIMITED.



Legend

- Project Boundary
- Utilities Construction
- Sandy Ridge Works Area
- Lin Ma Hang Works Area
- 500m Assessment Area
- Watercourse
- Seasonal Watercourse
- Pond
- Developed Area
- Agricultural Land
- Marsh
- Wasteland
- Grassland
- Upland Grassland
- Shrubland
- Plantation
- Woodland
- Wet Woodland
- Village Area

Herpetofaunal Species of Conservation Importance

- Haplobatrachus chinensis*
- Ptyas mucosus*
- Rana taipehensis*
- Bungarus multicinctus*

Mammal Species of Conservation Importance

- Red muntjac
- Leopard cat
- East asian porcupine
- Himalayan Leaf-nosed Bat
- Porcupine scot
- Short-nosed fruit bat
- Leopard cat scat & Small indian civet scat

G	SEVENTH ISSUE	GL	02/16
F	SIXTH ISSUE	GL	01/16
E	FIFTH ISSUE	GL	12/15
D	FOURTH ISSUE	GL	10/15
Rev	Description	By	Date

Consultant
ARUP

Contract No. and Title:
 Agreement No. CE 1/2013(CE)
 Site Formation and Associated Infrastructural Works for Development of Columbarium, Crematorium and Related Facilities at Sandy Ridge Cemetery - Design and Construction

Drawing title
Locations of Mammal and Herpetofaunal Species of Conservation Importance at Sandy Ridge

Drawing no. Figure 9.7		Rev. G	
Drawn GL	Date 02/16	Checked EL	Approved ST
Scale AS SHOWN		Status PRELIMINARY	

COPYRIGHT RESERVED

土木工程拓展署
 Civil Engineering and Development Department